

# MediSorb<sup>®</sup> MSMC

Fully Qualified +15°C to +25°C Insulated Shipping Solutions

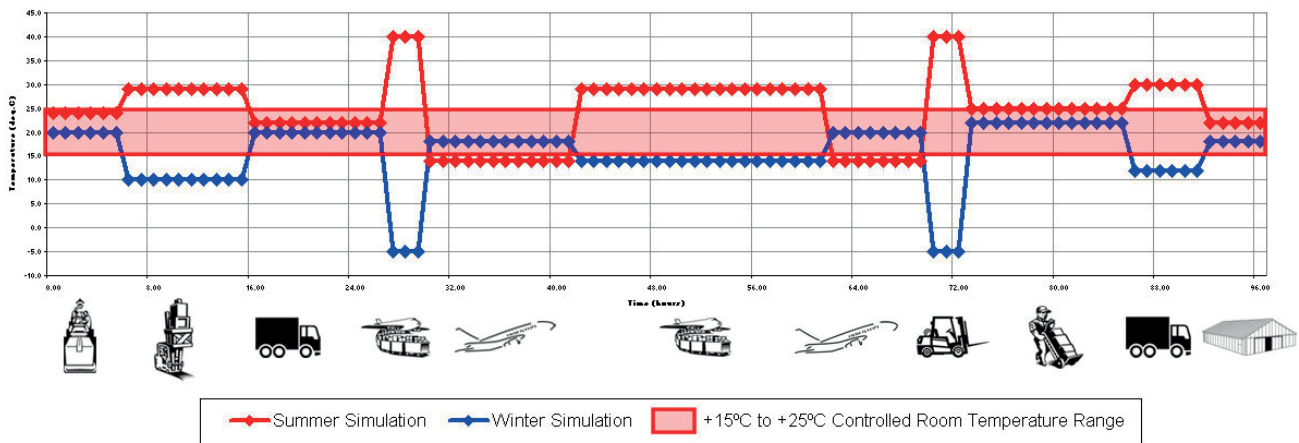
- +15°C to +25°C protection for up to 96 hours
- Qualification data available
- Common componentry across a number of sizes
- Easy to assemble
- Selection of sizes available world wide
- Easy to dispose/recycle
- On-site training available

# MediSorb® MSMC

- Our MediSorb® MSMC shipping systems are the latest addition to our range of temperate chain packaging to keep products between +15°C to +25°C during transportation.
- Our Medisorb® MSPCM products use phase change materials to maintain the desired temperature offering an excellent, robust performance in challenging conditions. The new Medisorb® MSMC systems use conventional coolpacks providing a lighter weight system which is easy to dispose and/or recycle.
- There are currently twelve Medisorb® MSMC systems available, with product volume ranging from 4 to 1130 litres. All systems use a minimum number of components which are already used in Laminar Medica's +2°C to +8°C range. All of the Medisorb® MSMC systems are prequalified for +15°C to +25°C, providing a fast and cost effective off-the-shelf solution. Qualification reports are available on request.

**For further information please contact us.**

## MediSorb® MSMC temperature testing 96 hrs Air transport



	External dimensions (mm)	Volumetric weight (kg)	Available product dimensions (mm)	Available product volume (l)	Weight of system (kg)	Duration (hrs)
<b>MediSorb® MSMC4</b>	455 x 400 x 332	10.1	235 x 180 x 95	4	7.4	96
<b>MediSorb® MSMC10</b>	470 x 470 x 410	15.1	232 x 232 x 182	10	10.4	96
<b>MediSorb® MSMC16</b>	470 x 470 x 535	19.7	232 x 232 x 302	16	15.1	96
<b>MediSorb® MSMC21</b>	571 x 515 x 441	21.6	347 x 287 x 214	21	19.0	96
<b>MediSorb® MSMC23</b>	470 x 470 x 660	24.3	232 x 232 x 422	23	20.3	96
<b>MediSorb® MSMC48</b>	571 x 515 x 719	35.2	342 x 287 x 489	48	31.6	96
<b>MediSorb® MSMC95</b>	826 x 616 x 804	68.2	577 x 367 x 449	95	45.3	96
<b>MediSorb® MSMC156</b>	855 x 632 x 1091	98.3	577 x 367 x 739	156	62.5	96
<b>MediSorb® MSMC226</b>	1224 x 812 x 877	145.3	924 x 516 x 475	226	76.3	96
<b>MediSorb® MSMC372</b>	1200 x 800 x 1125	180.0	924 x 516 x 780	372	107.4	96
<b>MediSorb® MSMC470</b>	1250 x 1050 x 1290	282.2	860 x 655 x 825	470	122.2	96
<b>MediSorb® MSMC1130</b>	1640 x 1425 x 1550	603.8	1005 x 1205 x 933	1130	183.0	96

**United Kingdom**  
+44 (0) 1442 828664  
enquiries@laminarmedica.co.uk  
www.laminarmedica.com



**Czech Republic**  
+420 38 331 0000  
enquiries@laminarmedica.cz  
www.laminarmedica.cz



**laminarmedica**  
insulated shipping systems



### Distributors

**USA**  
Saf-T-Pak Inc.  
+1 410-553-6066  
sales@saftpak.com  
www.saftpak.com



**Canada**  
Saf-T-Pak Inc.  
+1 780-486-0211  
sales@saftpak.com  
www.saftpak.com



**Singapore**  
Aeris Dynamics  
+65 6296 8368  
sales@aeris.com.sg  
www.aeris.com.sg

